



North Road, Romford, RM4

BUTLER & STAG



An exceptional seven-bedroom detached residence offering over 3,200 sq ft of beautifully arranged accommodation, designed for modern family living and elegant entertaining.



Freehold

- Detached Family Home
- Stunning Throughout
- Gated
- Kitchen/Utility Room/Cloak Room Is Tom Howley
- Seven Bedrooms/Four Bathrooms
- Home Office/Study
- Open-Plan Kitchen/Living/Dining Area
- Air-Conditioning In Living Room And Kitchen

This impressive home is centred around a stunning open-plan kitchen, dining and living space extending to over 35 ft, creating a striking and sociable heart to the property. With a central island and excellent natural light, this space is perfectly suited to both everyday living and hosting on a grand scale, with seamless access to the garden.

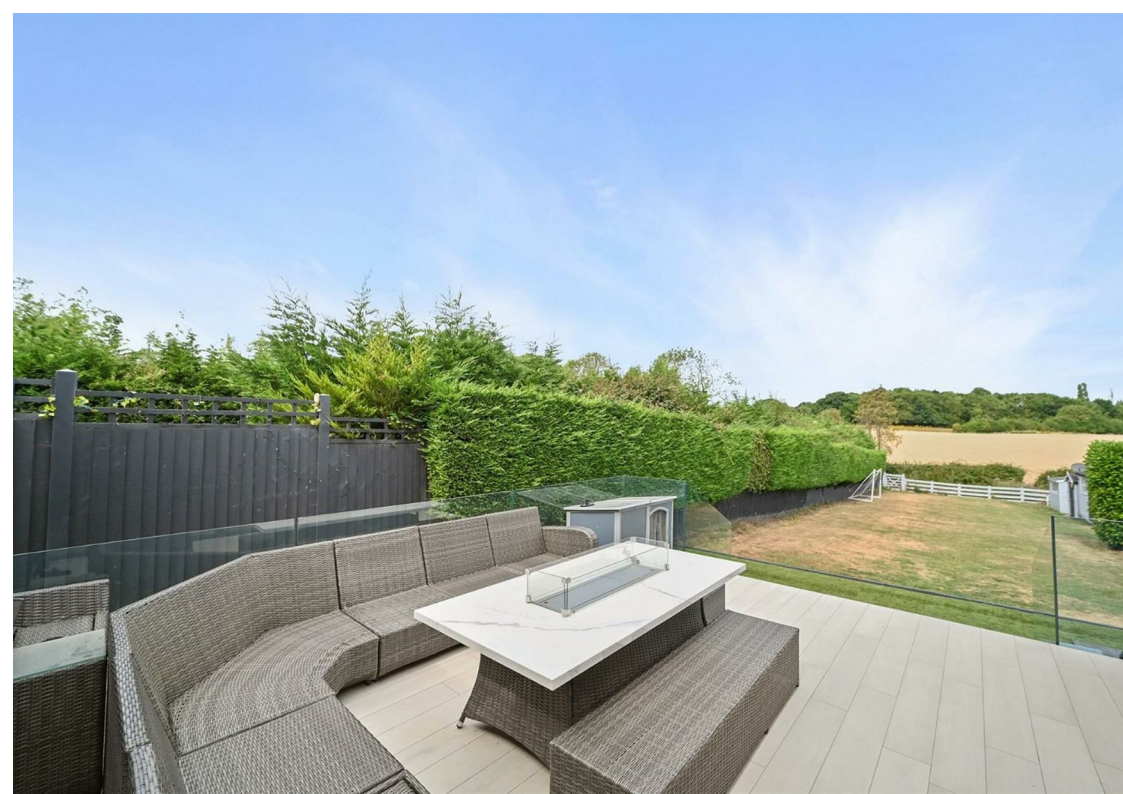
Complementing this are multiple reception rooms, including a generous formal sitting room and an additional family room, providing flexibility for a range of lifestyles. A separate study offers an ideal work-from-home solution, while a utility room and ground floor bathroom enhance the practicality of the home.

The first floor presents four well-proportioned bedrooms arranged around a spacious landing. The principal suite enjoys its own en-suite bathroom, while the remaining bedrooms are served by a contemporary family bathroom.

Occupying the top floor are two further substantial double bedrooms, each benefiting from en-suite facilities, creating an ideal space for guests, teenagers, or a private retreat.

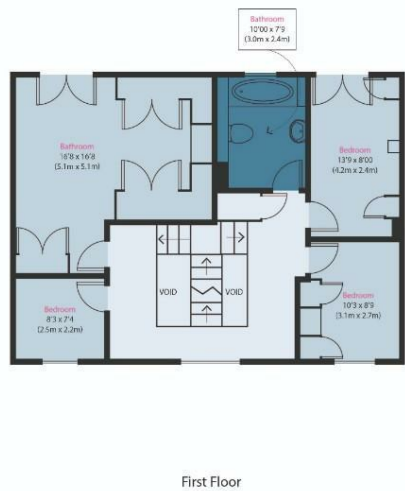
The property offers an excellent balance of open-plan living and private space, making it perfectly suited to growing families or those seeking versatile accommodation.





Approximate Gross Internal Area
3245 sq ft (301 sq m)

This entire floor plan has been prepared on an approximate basis for illustrative purposes only. While we do not doubt the floor plan accuracy and completeness, you or your advisors should conduct a careful, independent investigation of the property to assess all relevant variables. Copyright: www.btlr.co.uk



BUTLER & STAG

☎ 01992 667666
 🏠 4 Forest Drive, Theydon Bois, Essex, CM16 7EY
 ✉ theydon@butlerandstag.com

www.butlerandstag.uk

IMPORTANT NOTICE - These particulars have been prepared in good faith and they are not intended to constitute part of an offer or contract. We have not performed a structural survey on this property and the services, appliances and specific fittings have not been tested. All photographs, measurements, floor plans and distances referred to are given as a guide and should not be relied upon.